

**THE MAJESTIC SERIES**

The Majestic

**9590**

**27' x 52'**

DIMENSIONS

**1,382** sf

LIVING SPACE

**3**

BEDROOMS

**2**

BATHROOMS

**OVERVIEW**

The beautiful "Green Acres Special" designed by our customers. Upscale with the prowl porch to bring in light and views, adding a spacious covered outdoor space. Customize by stretching to 56' for more space all at factory invoice costs. Designed with many ease-of-living features.

Heritage Home Center

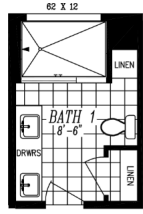
**(425) 353-5464**

or **Request Firm Quote**

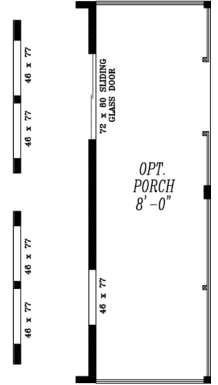
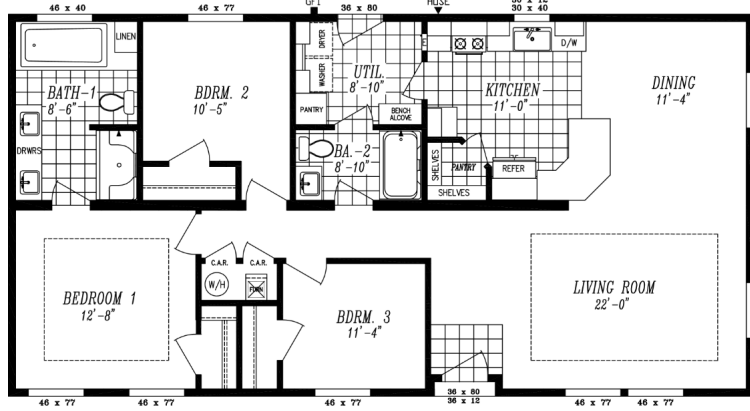
EMAIL US

**01 FLOOR PLAN**

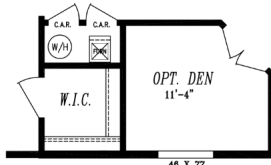
1,382 SQ FT · 27' x 52'



OPT. 48 X 72 SHWR.



OPT. WINDOWS OPT. PORCH

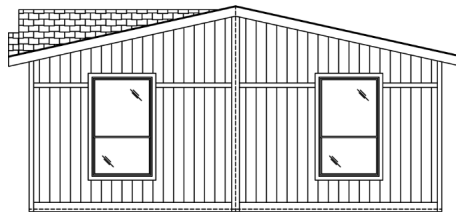


OPTIONAL DEN I.P.O. BEDROOM

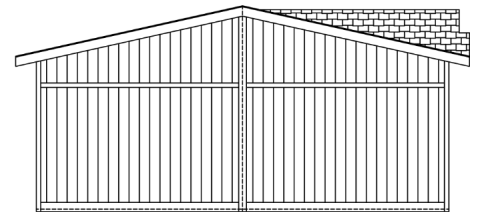
**02 FRONT ELEVATION**



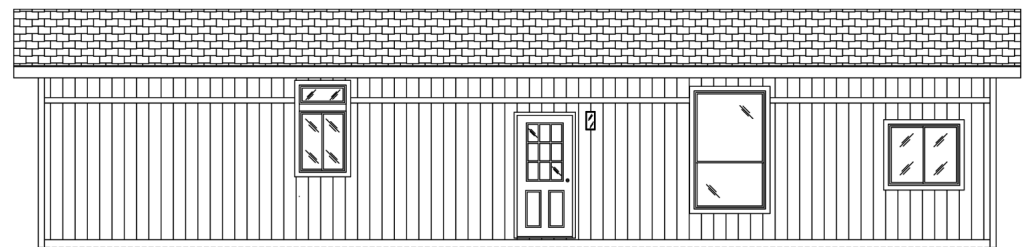
FRONT SIDEWALL



FRONT ENDWALL



REAR ENDWALL



REAR SIDEWALL

# The Majestic 9590

3 Bedrooms | 2 Bathrooms | 1,382 sq ft

## DELUXE PRIMARY BATH

- ✓ 60" Walk In Shower with Frameless Door
- ✓ Linen Storage
- ✓ Dual Rectangular Sinks
- ✓ 6' Rectangular Soaking Tub

## STANDARD FEATURES

- ✓ Energy Star Rated Home
- ✓ Cement Lap Siding with Structural Sheathing on Front Door Sidewall
- ✓ LP SmartSide Panel Siding on End Walls and Back Door Sidewall
- ✓ Weather Resistant House Wrap Under Siding
- ✓ Recessed Front Entry with Composite Decking
- ✓ Large Dormer with Eyebrow and Shake Accent Area
- ✓ Oversized Eaves and Overhangs
- ✓ Architectural Shingles with Lifetime Warranty (Limited)
- ✓ Sherwin Williams Paint Interior and Exterior
- ✓ Tape and Texture Drywall with Rounded Corners
- ✓ Tray Ceiling in Living Room and Bedroom #1
- ✓ Baseboard Molding Throughout
- ✓ 9' Tall Flat Ceilings
- ✓ Hardwood Cabinets Featuring 42" Tall Overheads
- ✓ 6" Recessed LED Lighting
- ✓ Ceiling Fan Ready in Living Room and Family Room
- ✓ Fiberglass Tubs and Showers
- ✓ Pfister Faucets Throughout
- ✓ Congoleum LUX Vinyl Flooring
- ✓ Shaw 25 ounce Stain Resistant Carpet
- ✓ Kwikset Door Hardware featuring Thumbatch Front Door
- ✓ Craftsman Style Front Door and 9 Lite Rear Door
- ✓ ecobee Smart Thermostat
- ✓ Carrier SmartComfort Electric Furnace
- ✓ 2"x4" Interior Walls
- ✓ 2"x6" Exterior Walls
- ✓ Farm Apron Sink
- ✓ Laundry Overhead Cabinets with Hanging Rod

## STAINLESS STEEL APPLIANCE PACKAGE

- ✓ Side by Side Energy Star Refrigerator with Ice and Water
- ✓ Energy Star Dishwasher
- ✓ Above Range Microwave

**Heritage Home Center**  
Washington's Price and Volume Leader

**(425) 353-5464**

— CALL TO TOUR

[Request Firm Quote](#)

— EMAIL US

# The Majestic 9590

3 Bedrooms | 2 Bathrooms | 1,382 sq ft

---

✓ Smooth Top Self-Cleaning Electric Range

## MOST POPULAR UPGRADES

- ✓ Full Allura Hardi Plank Siding
- ✓ 4:12 Roof Pitch with 7'6" Sidewalls
- ✓ Shaw 40 ounce Stain Resistant Carpet
- ✓ Prow Porch
- ✓ Clerestory Dormer
- ✓ Highland Exterior
- ✓ 2x8 Floor Joists
- ✓ 31 Cu. Ft. French Door Refrigerator
- ✓ Over the John Cabinet
- ✓ Skylight
- ✓ Electric Fireplace with Mantle
- ✓ Solid Surface Counters

---

**Heritage Home Center**  
Washington's Price and Volume Leader

**(425) 353-5464**

— CALL TO TOUR

[Request Firm Quote](#)

— EMAIL US

Features/specs subject to change.

# The Majestic 9590

3 Bedrooms | 2 Bathrooms | 1,382 sq ft

## Photo Gallery



Photo 1



Photo 2



Photo 3

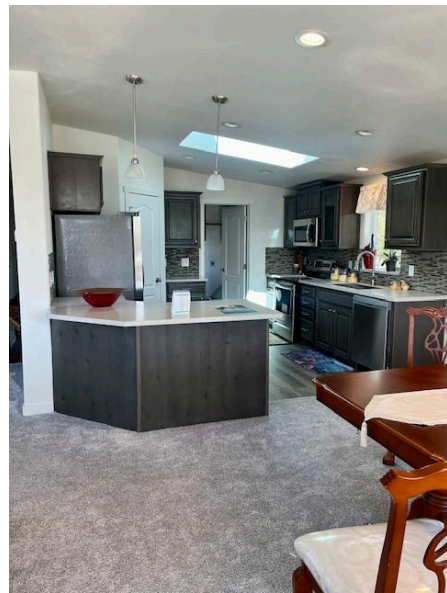


Photo 4

**Heritage Home Center**  
Washington's Price and Volume Leader

**(425) 353-5464**

— CALL TO TOUR

**[Request Firm Quote](#)**

— EMAIL US

Features/specs subject to change.

# The Majestic 9590

3 Bedrooms | 2 Bathrooms | 1,382 sq ft



Photo 5



Photo 6

---

**Heritage Home Center**  
Washington's Price and Volume Leader

**(425) 353-5464**  
— CALL TO TOUR

**[Request Firm Quote](#)**  
— EMAIL US

Features/specs subject to change.